

MODEL NO: UOHC3300-2413

24V/12.5A

1. Electrolytic Capacitor Life(壽命降額曲線)

※Character Condition(特性條件):

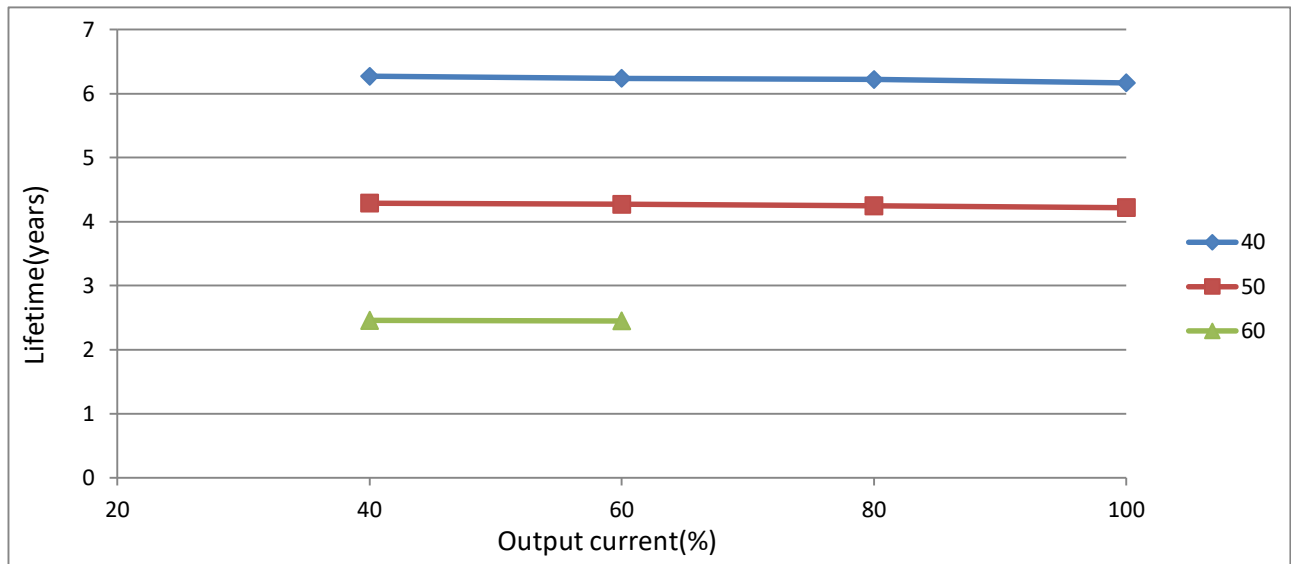
| | | |
|---|-------------------------|----------------|
| 1 | I/P Voltage(Vac)(輸入電壓) | 100V |
| 2 | I/P Frequency(Hz)(輸入頻率) | 50Hz |
| 3 | Output load(輸出負載) | 40%~Full Load |
| 4 | Ambient Temp.(°C)(環境溫度) | 40°C/50°C/60°C |
| 5 | Sample Size(取樣數) | 1PCS |
| 6 | Mounting Method(取付方法) | Mounting A |

※Character Equipment(特性設備):

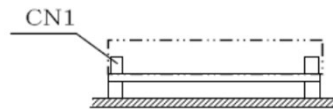
| | | |
|---|--------------------|----------------------------------|
| 1 | Equipment Item(設備) | Model No. / Manufacturer(製造商和型號) |
| 2 | AC Source(變頻器) | ALL POWER/APG-1005N |
| 3 | Power Meter(功率表) | IDRC/CP-260 |
| 4 | DC load(DC負載) | Prodigit/3302C |
| 5 | Oscilloscope(示波器) | Tektronix/TDS3014B |

※Character Data(特性數據):

| | | 壽命曲線圖 | | | |
|-------------------|----|-------|------|------|------|
| Output current(%) | | 40 | 60 | 80 | 100 |
| Temperature (°C) | 40 | 6.27 | 6.24 | 6.22 | 6.17 |
| | 50 | 4.29 | 4.27 | 4.25 | 4.22 |
| | 60 | 2.46 | 2.45 | | |



Mounting A



MODEL NO: UOHC3300-2413

24V/12.5A

2.Electrolytic Capacitor Life(壽命降額曲線)

※Character Condition(特性條件):

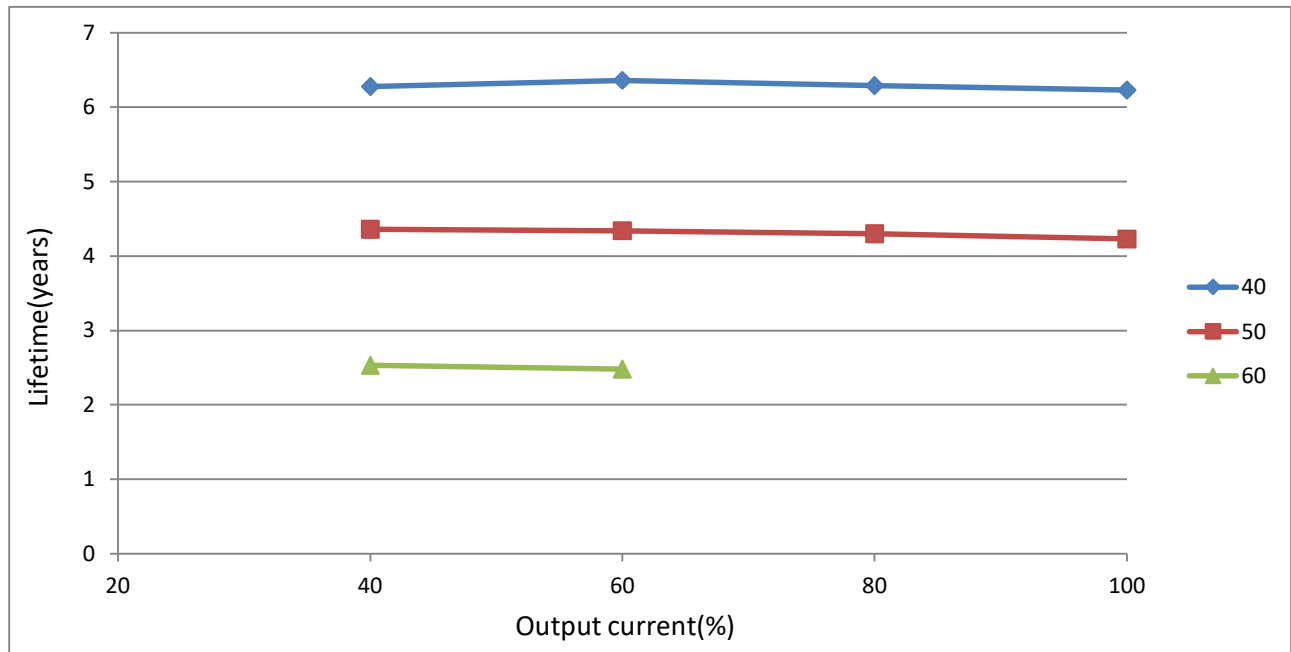
| | | |
|---|-------------------------|----------------|
| 1 | I/P Voltage(Vac)(輸入電壓) | 100V |
| 2 | I/P Frequency(Hz)(輸入頻率) | 50Hz |
| 3 | Output load(輸出負載) | 40%~Full Load |
| 4 | Ambient Temp.(°C)(環境溫度) | 40°C/50°C/60°C |
| 5 | Sample Size(取樣數) | 1PCS |
| 6 | Mounting Method(取付方法) | Mounting B |

※Character Equipment(特性設備):

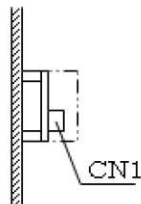
| | | |
|---|--------------------|----------------------------------|
| 1 | Equipment Item(設備) | Model No. / Manufacturer(製造商和型號) |
| 2 | AC Source(變頻器) | ALL POWER/APG-1005N |
| 3 | Power Meter(功率表) | IDRC/CP-260 |
| 4 | DC load(DC負載) | Prodigit/3302C |
| 5 | Oscilloscope(示波器) | Tektronix/TDS3014B |

※Character Data(特性數據):

| 壽命曲線圖 | | | | | |
|-------------------|----|------|------|------|------|
| Output current(%) | 40 | 60 | 80 | 100 | |
| Temperature (°C) | 40 | 6.28 | 6.36 | 6.29 | 6.23 |
| | 50 | 4.36 | 4.34 | 4.3 | 4.23 |
| | 60 | 2.53 | 2.48 | | |



Mounting B



3. Electrolytic Capacitor Life(壽命降額曲線)

※Character Condition(特性條件):

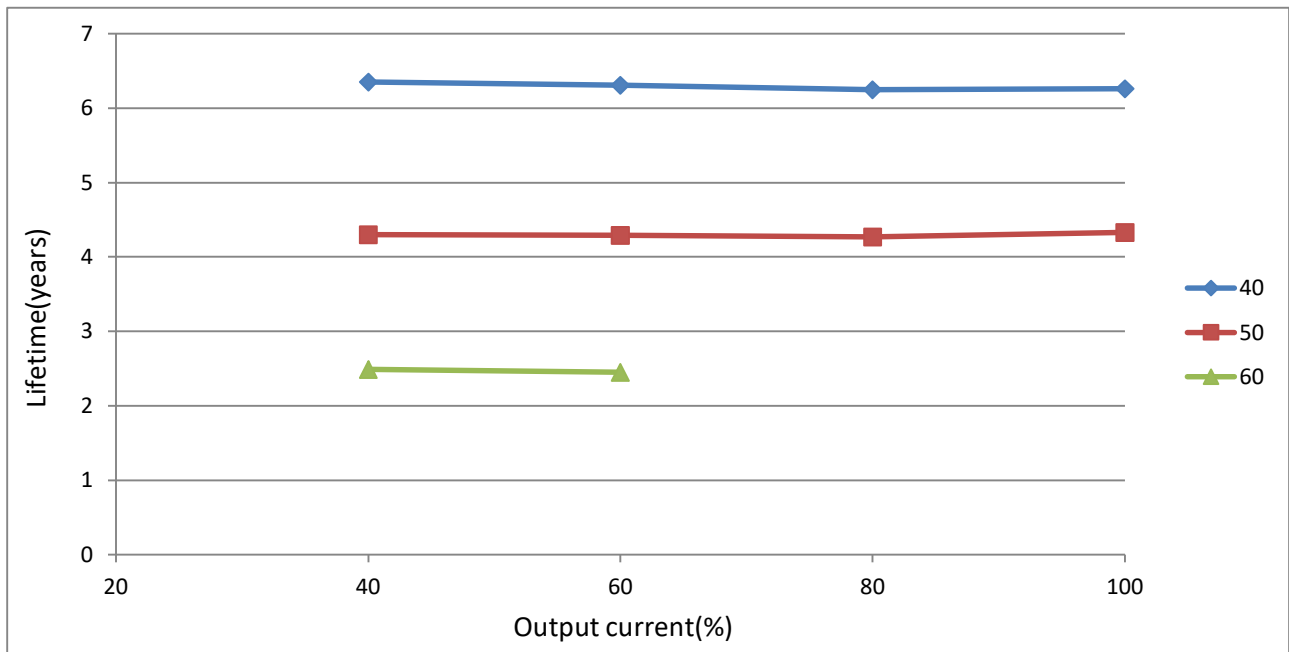
| | | |
|---|-------------------------|----------------|
| 1 | I/P Voltage(Vac)(輸入電壓) | 100V |
| 2 | I/P Frequency(Hz)(輸入頻率) | 50Hz |
| 3 | Output load(輸出負載) | 40%~Full Load |
| 4 | Ambient Temp.(°C)(環境溫度) | 40°C/50°C/60°C |
| 5 | Sample Size(取樣數) | 1PCS |
| 6 | Mounting Method(取付方法) | Mounting C |

※Character Equipment(特性設備):

| | | |
|---|--------------------|----------------------------------|
| 1 | Equipment Item(設備) | Model No. / Manufacturer(製造商和型號) |
| 2 | AC Source(變頻器) | ALL POWER/APG-1005N |
| 3 | Power Meter(功率表) | IDRC/CP-260 |
| 4 | DC load(DC負載) | Prodigit/3302C |
| 5 | Oscilloscope(示波器) | Tektronix/TDS3014B |

※Character Data(特性數據):

| 壽命曲線圖 | | | | | |
|-------------------|----|------|------|------|------|
| Output current(%) | 40 | 60 | 80 | 100 | |
| Temperature (°C) | 40 | 6.35 | 6.31 | 6.25 | 6.26 |
| | 50 | 4.3 | 4.29 | 4.27 | 4.33 |
| | 60 | 2.49 | 2.45 | | |



MountingC

